

Shear Rheometer: TA Instruments Discovery Hybrid Rheometer 2

Use: Viscoelastic measurements of solutions, semi-solids

Materials: Polymer solutions, gels, curing

Cement pastes, ceramic slurries

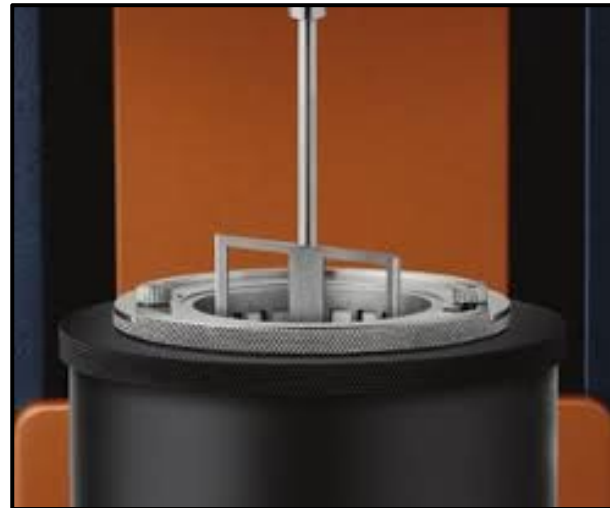
Temperature range: -40 to 200 °C

Capabilities: Parallel and cone-and-plate, concentric cylinders, Double-gap
DMA testing, magnetorheological accessory

Tests: Flow curves, amplitude and frequency sweeps, temperature sweeps



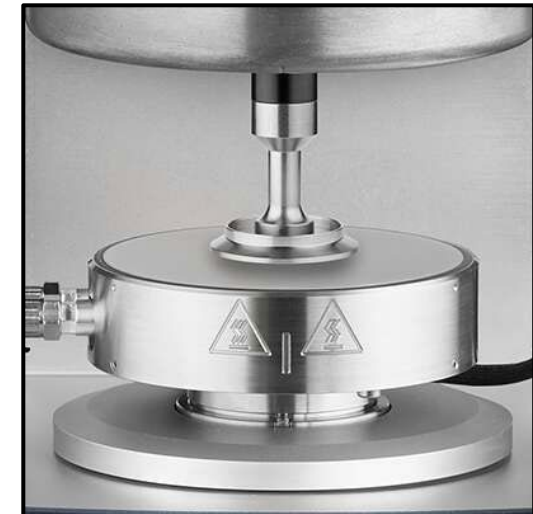
Magnetorheology
Up to 1 Tesla



Building Materials Cell



Concentric Cylinders



Peltier Plates